



NOTE:

Modified from Google Earth Pro aerial photograph.

Figure 1
 General Site Location
 Gravity Survey
 New Paltz, New York

File 13G29

December, 2013

HAGER-RICHTER GEOSCIENCE, INC.
 Salem, New Hampshire



LINE 1



LINE 2



LINE 3

Figure 2
Site Photos
Gravity Survey
New Paltz, New York

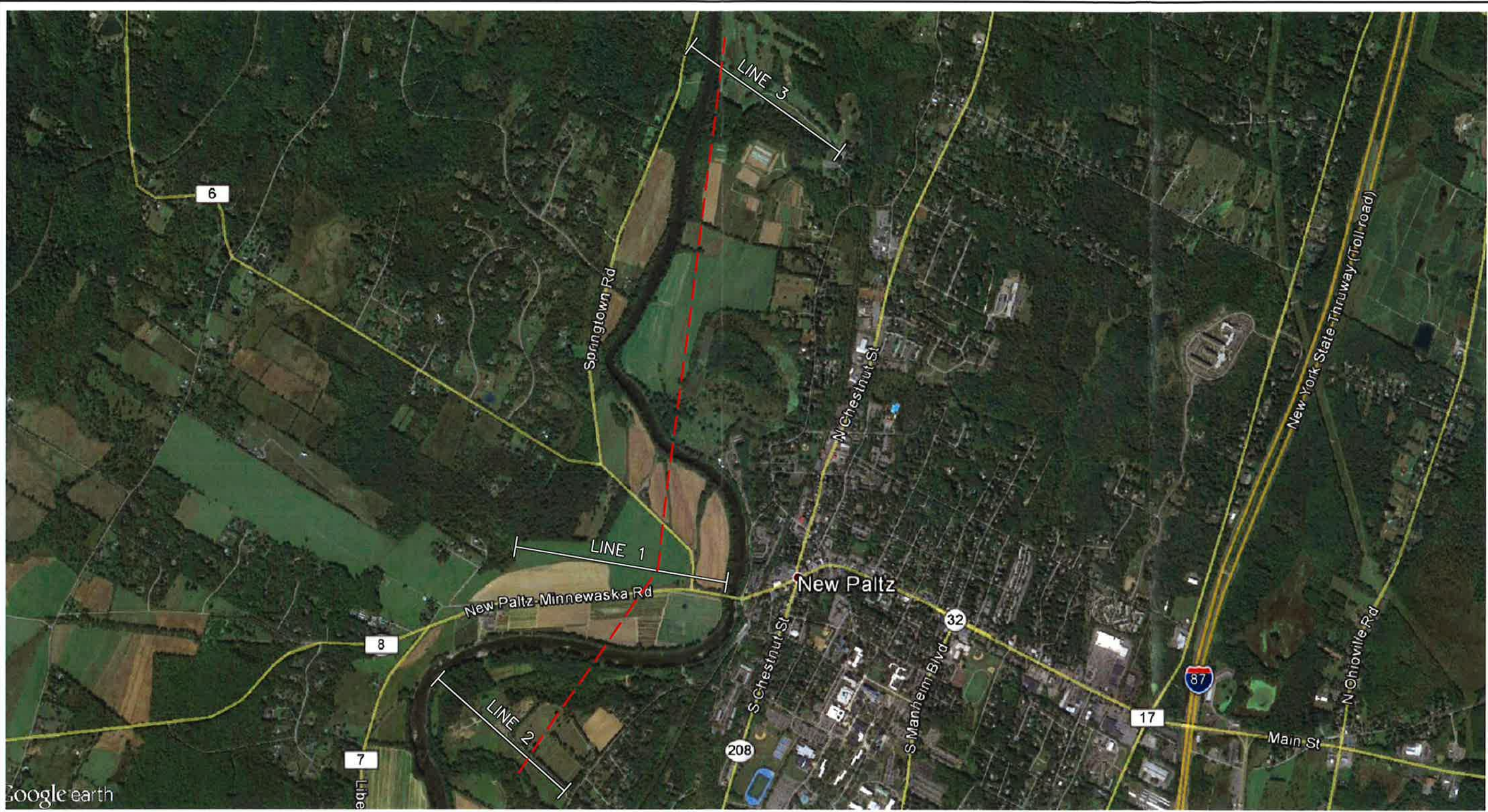
File 13G29

December, 2013

HAGER-RICHTER GEOSCIENCE, INC.
Salem, New Hampshire

NOTE:

These photos show the conditions along the survey lines at the time of data acquisition.



NOTE:
Modified from Google Earth Pro aerial photograph.

LEGEND

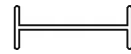

 SURVEY LINE
 MAXIMUM THICKNESS OF BURIED VALLEY



Figure 3
Survey Line Locations & Interpretation
Gravity Survey
New Paltz, New York

File 13G29	December, 2013
HAGER-RICHTER GEOSCIENCE, INC. Salem, New Hampshire	

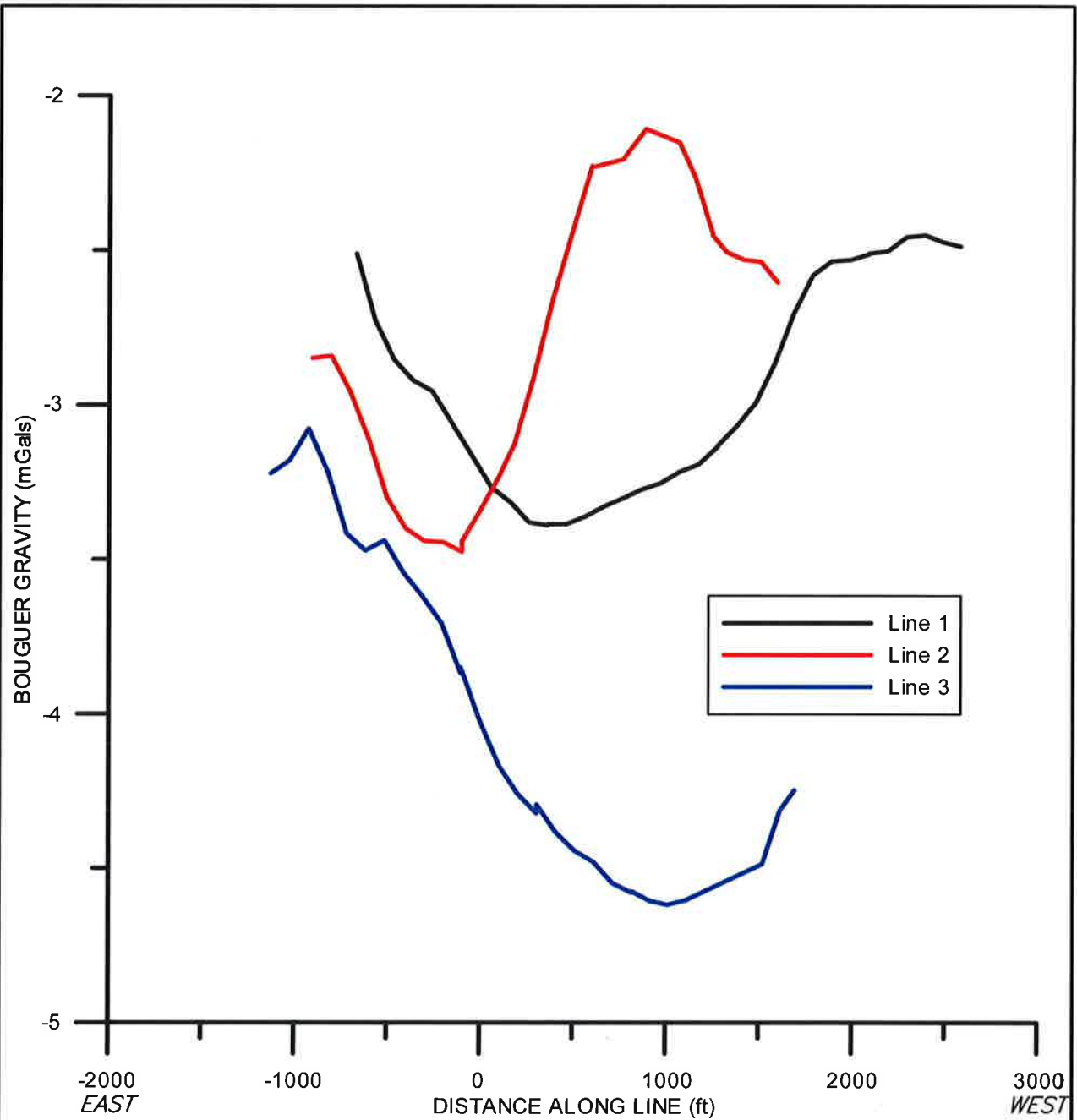


Figure 4
 Bouguer Gravity Anomalies
 Gravity Survey
 New Paltz, New York

File 13G29	December, 2013
------------	----------------

HAGER-RICHTER GEOSCIENCE, INC.
 Salem, New Hampshire