



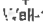





LEGEND

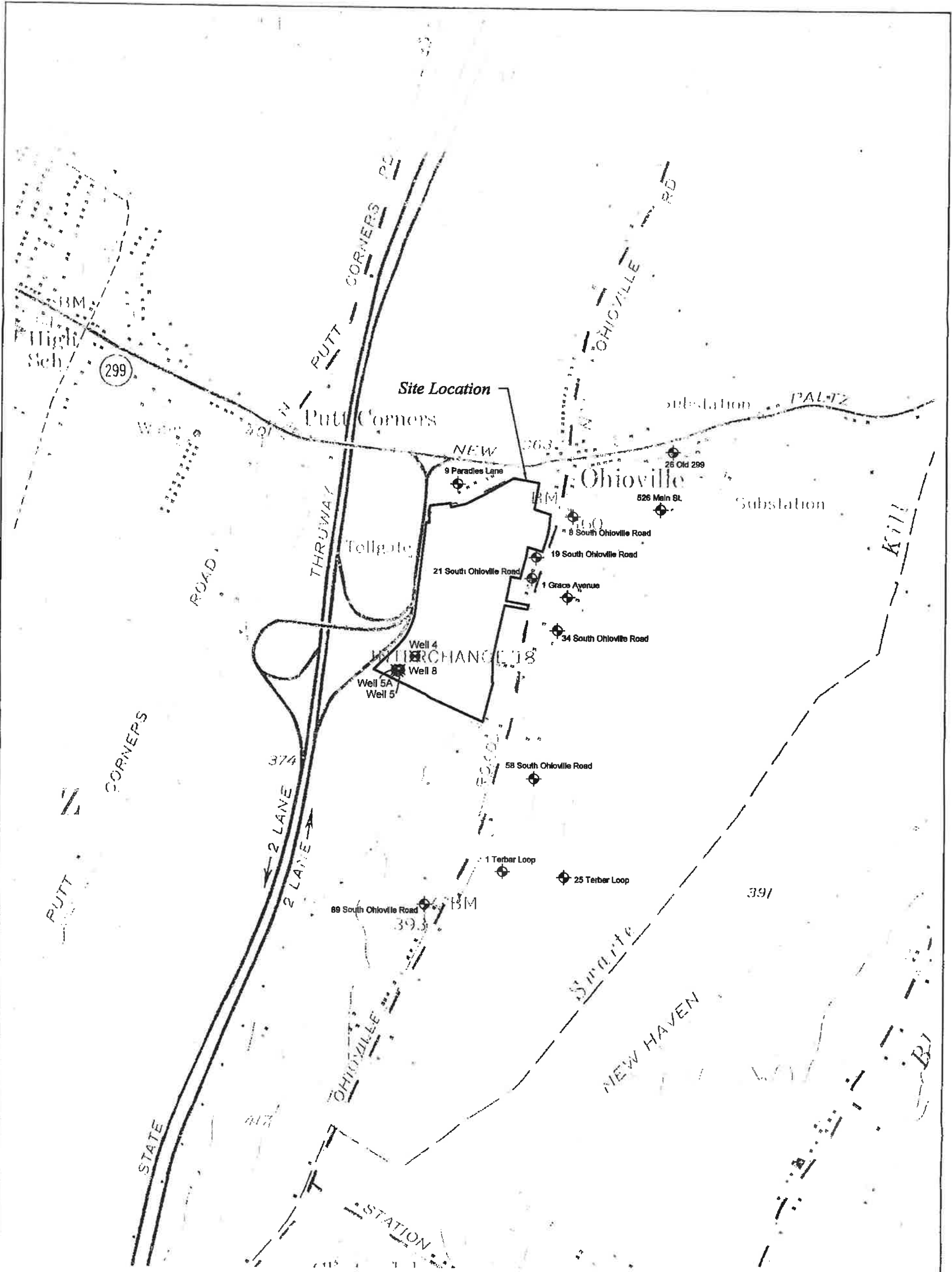
-  APPROXIMATE TEST WELL LOCATION
-  APPROXIMATE MONITOR WELL LOCATION
-  APPROXIMATE MONITOR WELL LOCATION WELL DAMAGED OR NOT LOCATED
-  APPROXIMATE PIEZOMETER LOCATION
-  APPROXIMATE WELL DISCHARGE LOCATION WELLS 4, 5, 5A AND 8
-  SITE BOUNDARY
-  WETLAND BOUNDARY

**CROSS ROADS AT NEW PALTZ
PROPOSED PLANED UNIT DEVELOPMENT
NEW PALTZ, NEW YORK**

SITE MAP

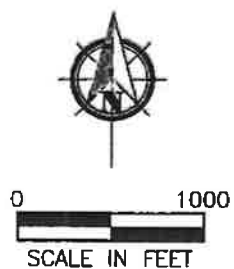
DATE	REVISED	PREPARED BY:
		LEGGETTE, BRASHEARS & GRAHAM, INC.
		Professional Ground-Water and Environmental Engineering Services
		4 Research Drive
		Suite 301
		Shelton, Connecticut 06484
		(203) 929-8555
		
DRAWN:	FCS	CHECKED: MW
		DATE: 9/20/07
		FIGURE: 2





SOURCE: USGS TOPOGRAPHIC QUADRANGLES CLINTONDALE, NEW YORK (1957) AND ROSENDALE, NEW YORK (1980).

- LEGEND**
- ◆ APPROXIMATE LOCATION OF RESIDENTIAL WELL MONITORED
 - APPROXIMATE TEST WELL LOCATION
- Well 4



**CROSS ROADS AT NEW PALTZ
PROPOSED PLANNED UNIT DEVELOPMENT
NEW PALTZ, NEW YORK**

OFFSITE WELL MONITORING NETWORK

DATE	REVISED	PREPARED BY:
		LEGGETTE, BRASBEARS & GRAHAM, INC.
		Professional Ground-Water and Environmental Engineering Services
		4 Research Drive
		Suite 301
		Shelton, Connecticut 06484
		(203) 929-8555
DRAWN:	FCS	CHECKED: MW
		DATE: 10/01/07
		FIGURE: 3